



TEAR DROP LIGHTING

- Suitable for laminar flow designed clean room system;
- Flexible installation design.
- Resist dust collection.
- Standard Functional Inductance and Ballast.
- Fulfill strict requirement of clean room technology.

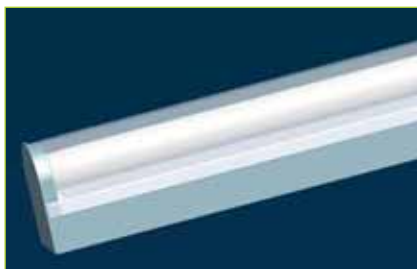
ICL series designed basis are closed body and U-shape. The ICL lamplights apparent are nice and have a warm light beam. This facility is suitable for clean room system.

Usage Area:

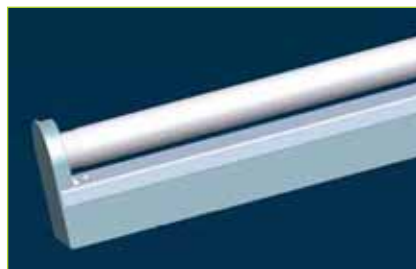
- Resist dust and moisture environment;
- Clean Room Classification:
Class 1, Class 10, Class, 100, Class 1000 and Class 10000.

Lamplight Installation:

- 1 **Ceiling Mounted Installation:** The lamplight contain box can mount on the ceiling with fasten technique.
- 2 **Convenient Replace and Maintenance:** The lamplight end-cover and U-shape cover can take-off for easily replacement and maintenance.



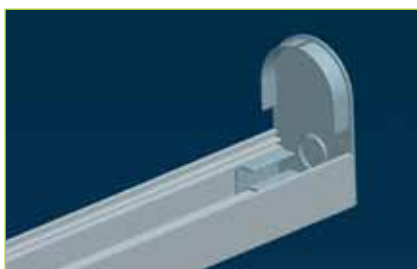
Whole Light Fitting



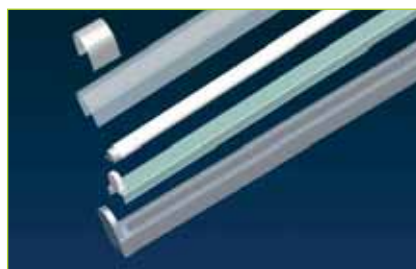
Without Transparent Cover



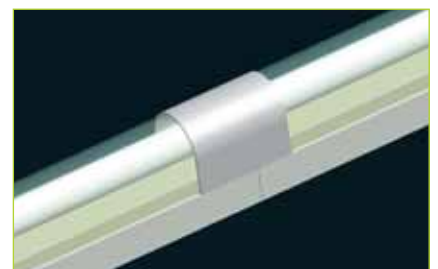
Built In End Cover Fiting



End Cover With Hole
(for wiring purpose)



Whole Set Of Lighting



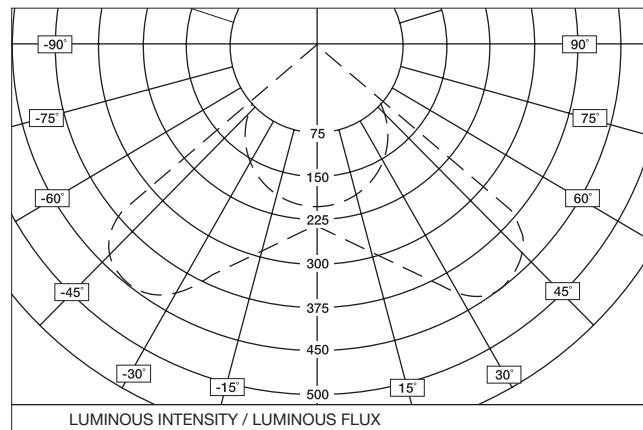
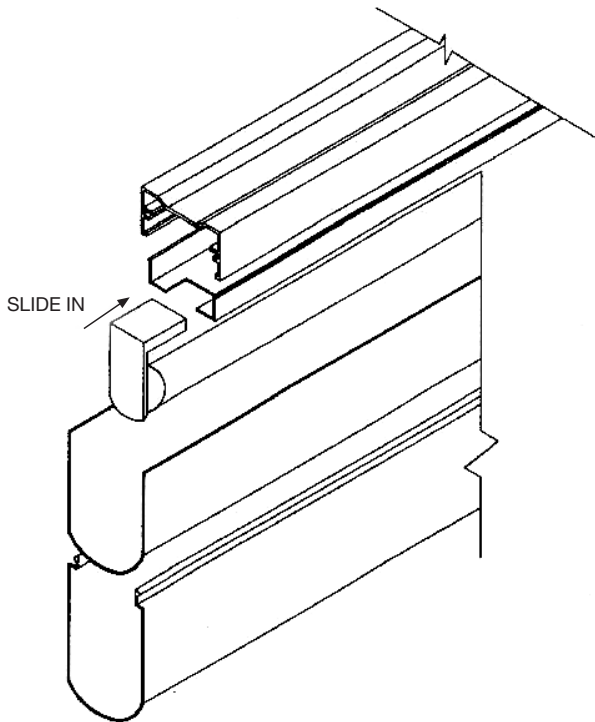
Connecting With
Each Other Continuously

PARAMETERS

OPTION	DESCRIPTION	CL 0618	CL 1236	
1	Power	220-240V/1-50Hz	220-240V/1-50Hz	
2	Lamp-house	TLD 18W	TLD 36W	
3	Size (L x W x H)	615 x 55 x 85	1225 x 55 x 85	
4	Luminous Flux	1050/mm	2500/mm	
5	Lamps Efficiency	86.5%	86.5%	
6	Weight	2.0kg	3.0kg	
7	Rectifier	Model	BTA18/20CE	BTA36/40EC
		Factor	>85%	>85%
		Temperature	0-50°C	0-50°C

SPECIFICATION

NO	DESCRIPTION	ATE-L2 (4ft or 5ft)	
1	Electric	1 x 220V ~ 240V	
2	Out Dimension	1250L/1490L x 55W x 85H	
3	Flourescent Lamp	FLR-40	
4	Ballast	L40A - P240V	
5	Lamp Base	Aluminium complete with lacquer finish	
6	Lamp Cover	Aluminium complete with lacquer finish	
7	Reflection Cover	Aluminium complete with lacquer finish	
8	Light Intensity (lm)	White Light	Yellow Light
		3000 (1x40W)	1970 (1x40W)
9	Weight (Kg)	2 Kg (1250L)	3.3 Kg (1490L)



UTILISATION FACTORS IN %										
ROOM C	CEILING	0.8				0.7	0.5	0.3		
	WALL	0.5		0.3		0.5	0.5	0.3	0.3	
	FLOOR	0.3	0.1	0.3	0.1	0.2	0.3	0.1	0.1	
ROOM INDEX K	0.6	35	33	30	28	34	33	28	28	
	0.8	41	39	36	35	40	40	35	35	
	1.0	48	44	43	40	45	45	40	39	
	1.5	57	52	52	49	53	54	48	47	
	2.0	61	55	57	52	57	57	51	50	
	3.0	67	59	64	57	62	62	55	54	
	5.0	71	61	69	59	64	65	57	57	
FITTING / AREA										
HEIGHT	AREA = A IN (m xm)									
	(1X)	20	30	40	50	60	70	80	90	100
3.0	300	1.4	2.0	2.5	3.0	3.5	4.0	4.5	5.0	5.5
	500	2.4	3.3	4.1	5.1	5.9	6.7	7.5	8.8	9.1



MayAir (S.E.A.) Sdn Bhd 551286-H (Formerly known as AEC Products And Services Sdn Bhd)

Kuala Lumpur (Headquarter)
 No. 51-A (2nd floor) Jalan USJ 10/1A, Taipan Triangle, 47620 Subang Jaya, Selangor Darul Ehsan, Malaysia.
 TEL. +603 5635 2908 FAX. +603 5635 6908 EML. enquiry@mayair.com.my

Penang Branch
 No. 46 (1st floor) Jalan Limau Manis 3, Taman Limau Manis, Bukit tengah, 14000 Bukit Mertajam, Penang.
 TEL. +604 507 8918/9918 FAX. +603 502 1918 EML. enquiry@mayair.com.my